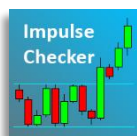


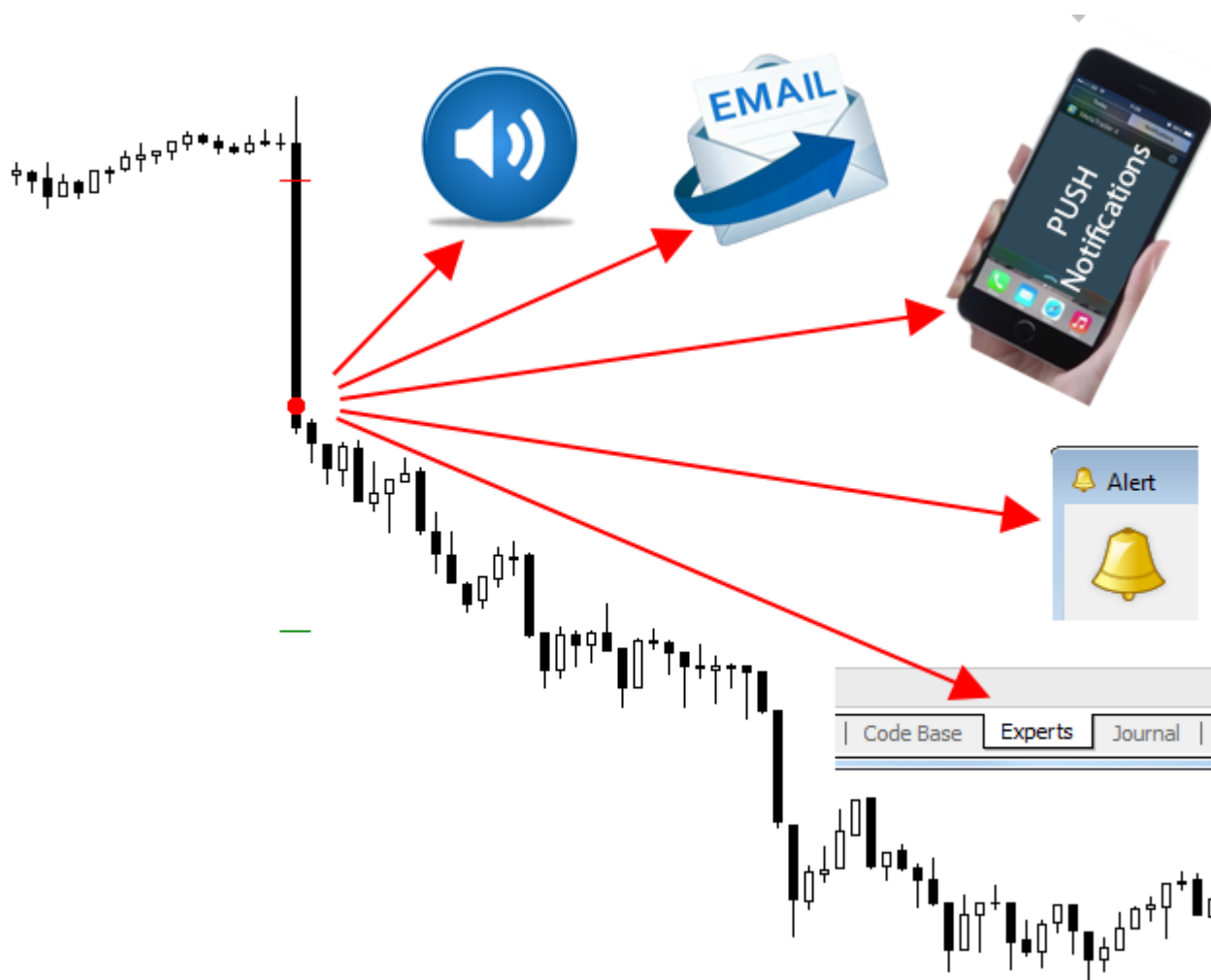
Basic Information



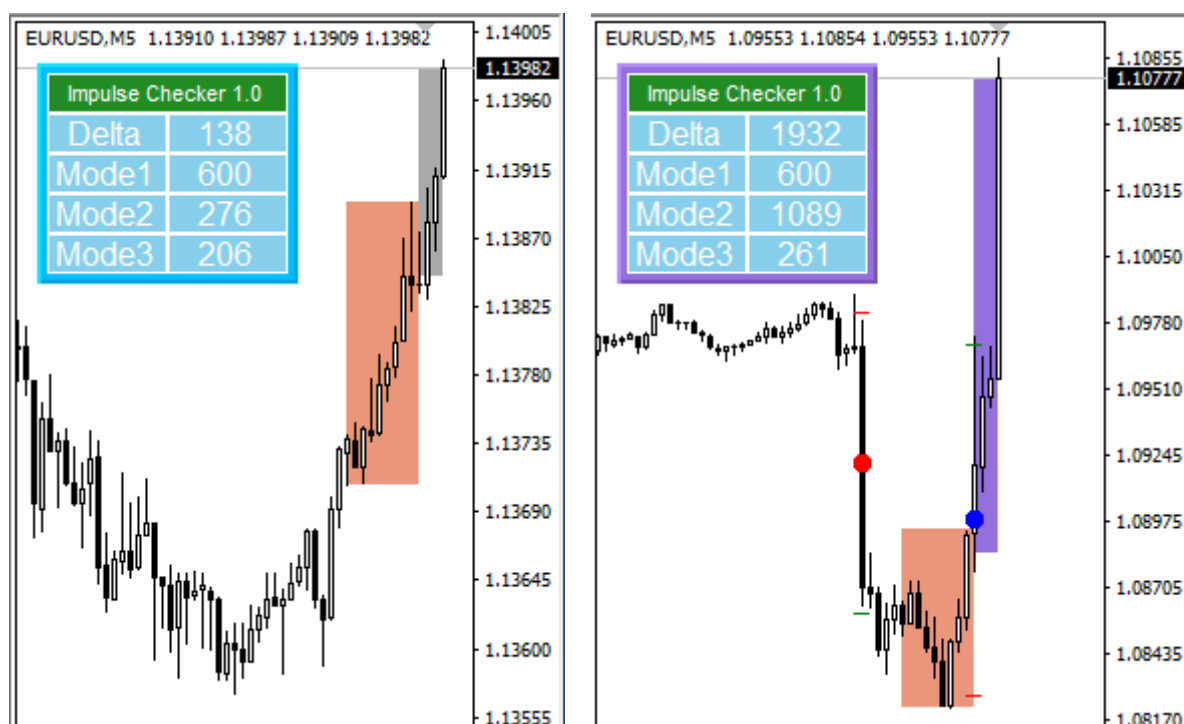
Indicator **Impulse Checker** is designed to inform about the acceleration of the price and determine the optimal entry points for increased volatility in the market, for example, at the opening of the market or during the release of important news.

When the signal appears, the indicator shows the signal entry point on the chart and (optionally) informs about it in the following ways:

- Playing a sound file
- Message to e-mail
- Message to the mobile terminal
- Message in the Alert window
- Report to the Journal of Experts



The signal for the acceleration of the price appears if the price for the last **T1sec** seconds has passed the distance not less than the values included in the **Mode1**, **Mode2** and **Mode3** modes, which, taking into account the correction factors, are displayed in the table in the upper left corner of the graph:



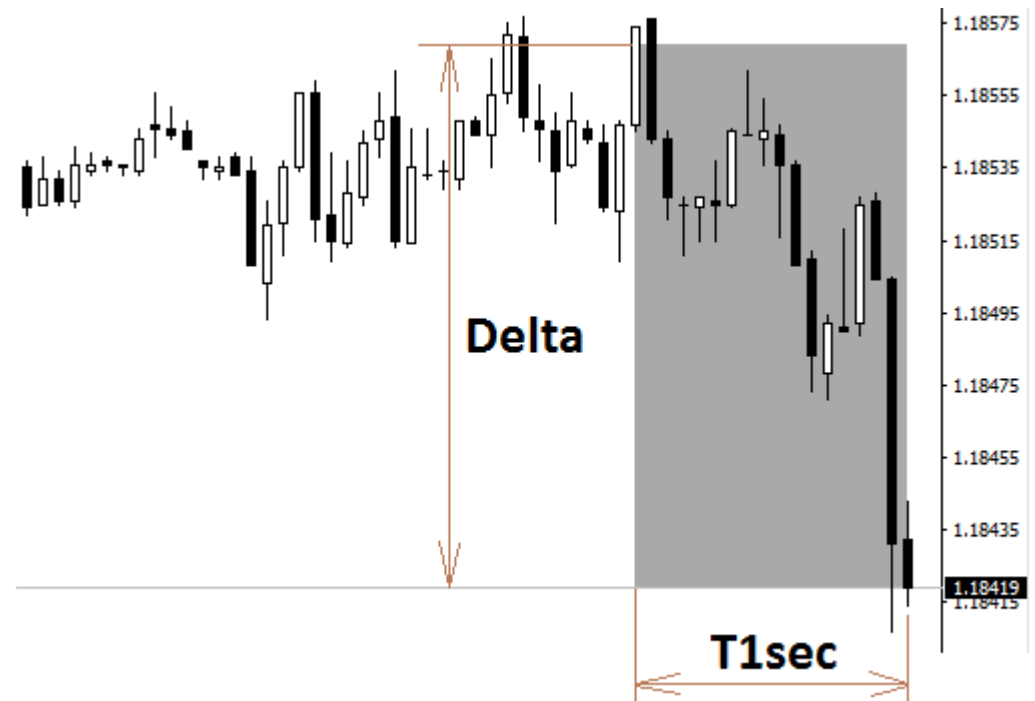
Delta – is the size of the price passage in points, based on which the acceleration is determined and the signal is generated.

Mode1 – specifies the minimum size of Delta based on the **MinDelta** parameter specified in the settings.

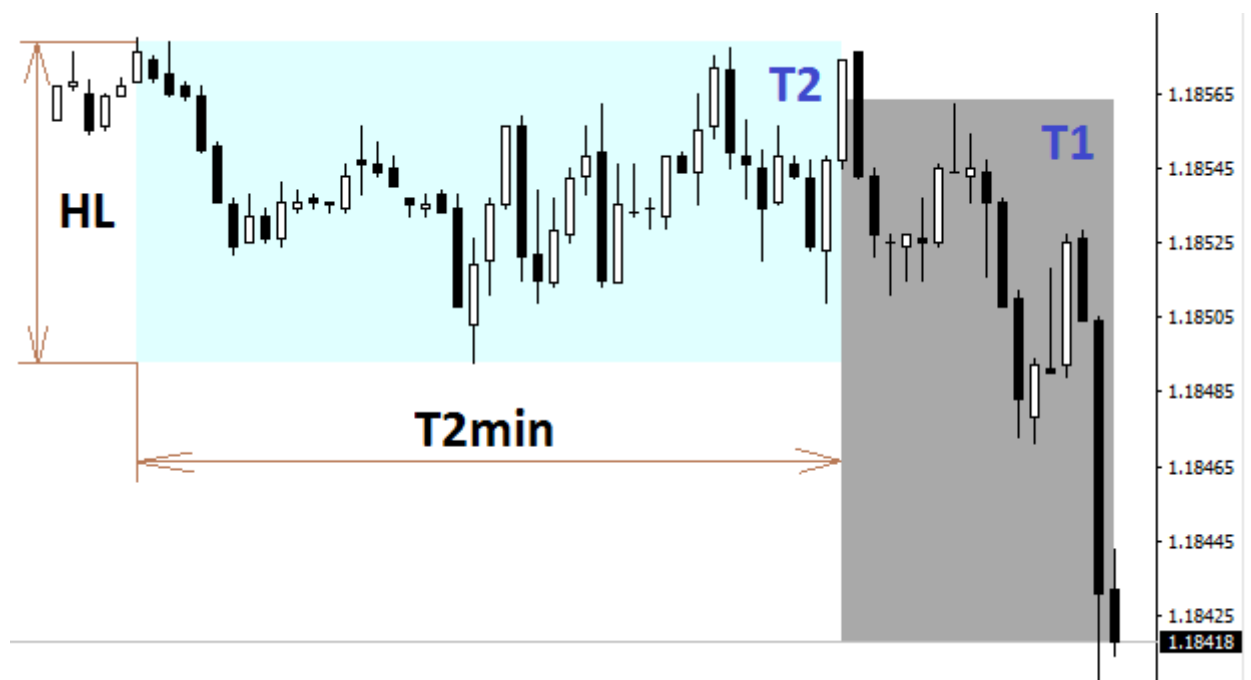
Mode2 – specifies the minimum size of Delta as the multiplication of the height of the flat channel **HL** by the correction factor **T2ratio**.

Mode3 – specifies the minimum size of Delta as a multiplication of the daily average volatility **DayVolAvg** for the last **T3day** days by the correction factor **T3ratio**.

In the process of working, the indicator draws a price channel in real time by ticks in the form of a rectangle T1 with a width of T1sec seconds to visually display the size of the passage of the price of Delta equal to the height of this channel. The height of the channel is calculated as the distance in points between the current price and the price that was T1sec seconds ago:



If Mode2 is enabled, the indicator draws a second price channel in the form of a rectangle T2 with a width of T2min minutes and a height HL equal to the distance from the maximum to the minimum of this channel to visualize the flat corridor:

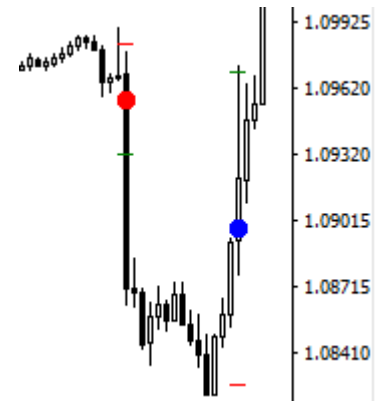


At the moment the signal appears, the color of the rectangle T1 changes. This color can be specified in the settings. The color of both rectangles with the missing signal can also be changed in the settings.

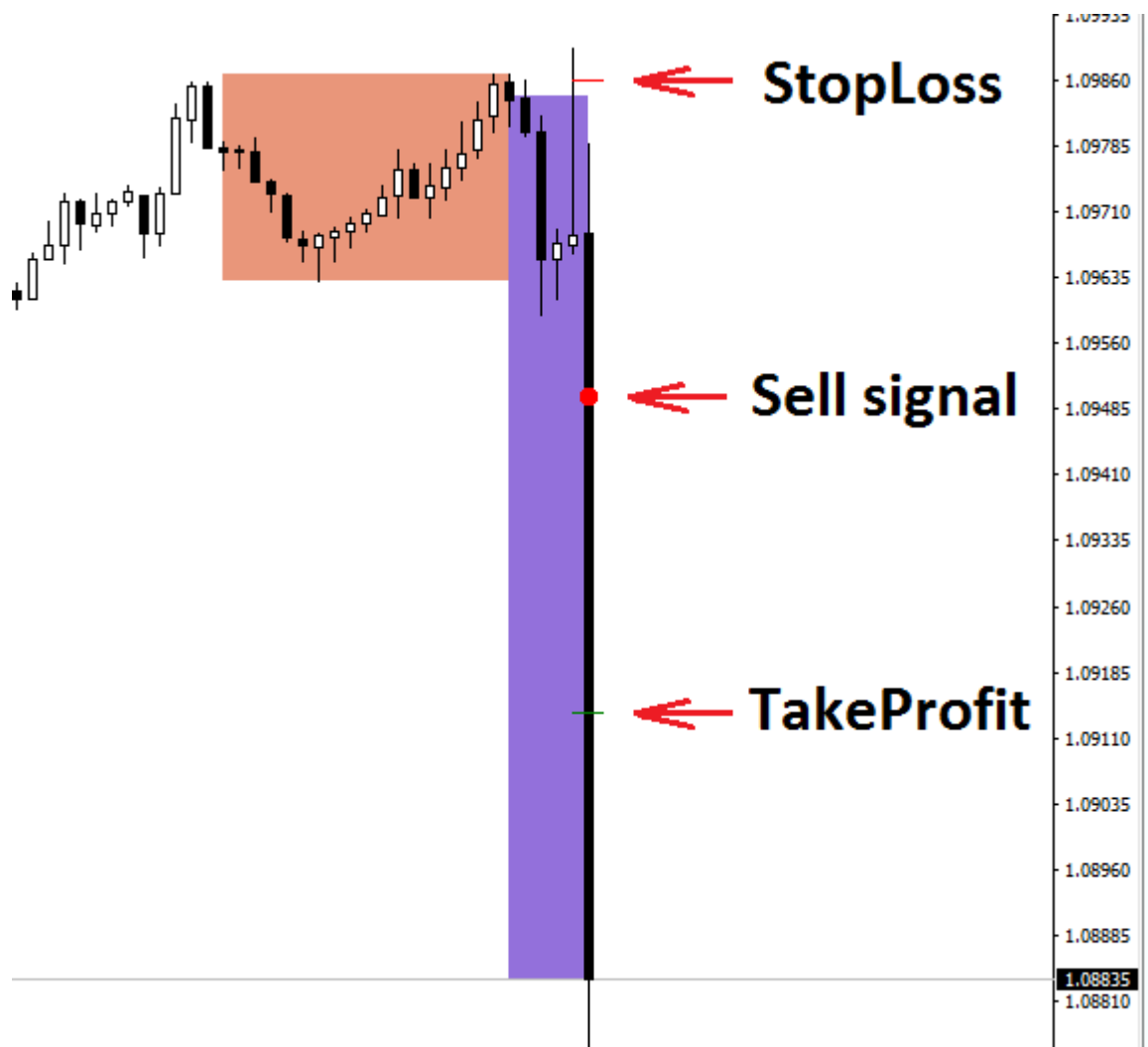
Entry points are not redrawn.

The color of the entry point for sell is **red**.

The color of the entry point for buy is **blue**.

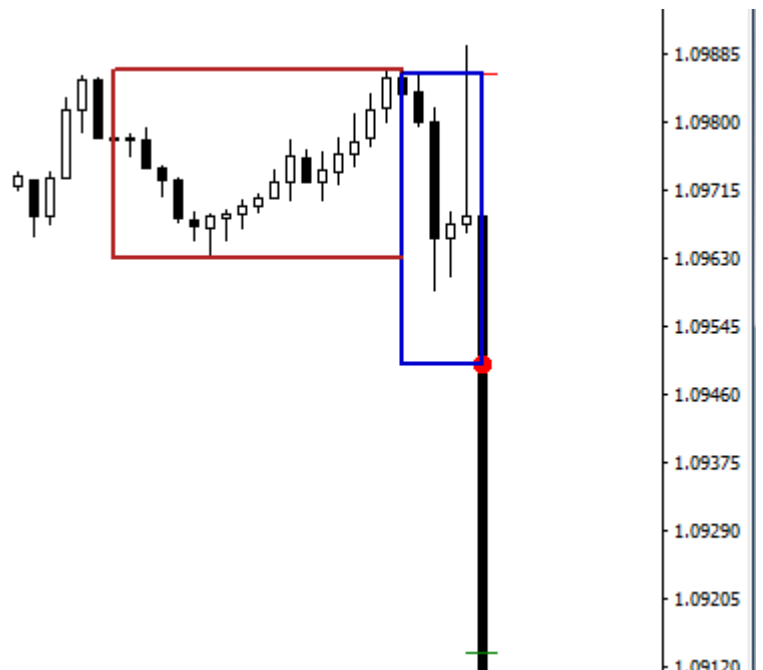


Simultaneously with the entry point, the indicator draws the levels StopLoss and TakeProfit, calculated as the coefficient from Delta through the parameters **SLratio** and **TPratio**, respectively. If these parameters are set to zero, the indicator will not draw corresponding levels. If you hover over one of these levels, a tooltip will appear with the distance to the level.



To see what the rectangles were when the signal occurred, just click on any signal entry point and the indicator draws outlines of these rectangles relative to the entry point.

To remove these rectangles, just click on any free space on the graph.



Description of the parameters

T1sec – width of the price channel T1, sec.

T2min – width of the price channel T2, min.

T3day – the number of days to calculate the average daily volatility, days. To account for the volatility of only the current day, set the value to zero.

Mode1 – in order to generate a Delta signal must exceed MinDelta

Mode2 – in order to generate a Delta signal must exceed $HL * T2ratio$

Mode3 – in order to generate a Delta signal must exceed $DayVolAvg * T3ratio$

MinDelta – the minimum number of points the price must pass for Mode1

T2ratio – correction factor to HL for Mode2

T3ratio – correction factor to DayVolAvg for Mode3

SignalPeriodSec – the minimum frequency to inform about signals, sec. If you need a frequency of one time per bar, set the value to zero.

LogInExpertsTab – message about the signal in the Experts journal.

Alert – message about the signal in a pop-up Alert box.

SendEmail – message about the signal to email.

PushNotification – message about the signal to mobile terminal.

PlaySound – message about the signal by playing an audio file.

WavFileName – name of the sound file for PlaySound. If the name is not specified, then it is equated to IC_symbol.wav, where symbol is the currency pair on the chart of which the indicator is launched.

ColorT1sig – color of the T1 rectangle when a signal occurs.

ColorT1 - color of the T1 rectangle when there are no signals.

ColorT2 - color of the T2 rectangle when there are no signals.

SignalPointWidth – size of the signal entry point.

SLratio – multiplier to the Delta value to calculate the distance from the entry point to the StopLoss level. If this level is not needed, set SLratio to zero.

TPratio – multiplier to the Delta value to calculate the distance from the entry point to the TakeProfit level. If this level is not needed, set TPratio to 0.